

To put the data of analyzed license plate into the database.

LET'S

To perform license plate recognition system with high recognition rate.  
To provide search support device having high recognition rate

# LPR

license plate recognition system



To analyze license number from video information acquired in real time or recorded video when the result of collation indicates coincidence, it is displayed on a monitor.



To store the registration information, and retrieve the registration information. Reproduction PC displays Video image according to the saved data into a hard disk.

To analyze license number from video information acquired in real time or recorded video when the result of collation indicates coincidence, it is displayed on a monitor.

## Mobile installation type.



We continue test photographing day and night in front of our Building.

## Permanent installation type.



Permanent type installed by utilizing pole. IP65 with excellent waterproof and dustproof.

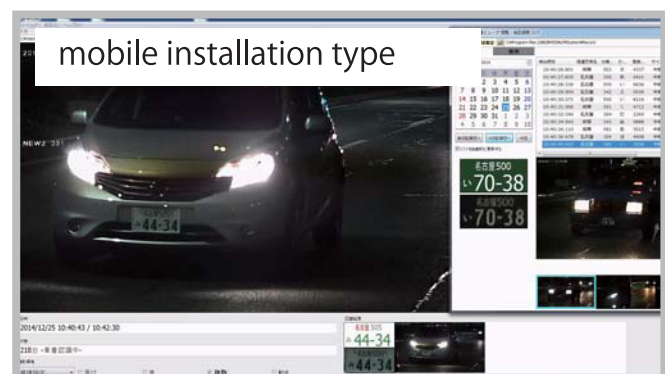
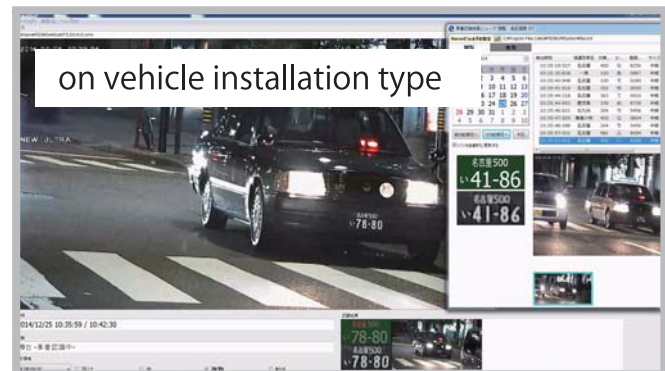
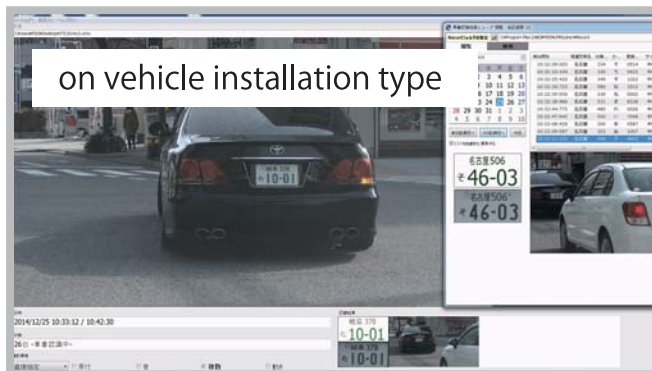
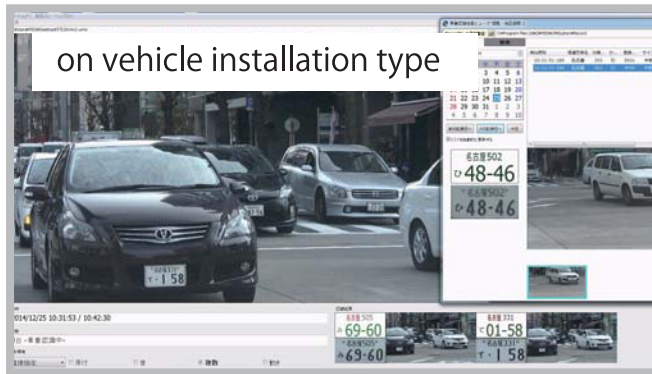
## On vehicle installation type.



Capable of photographing, analyzing even under investigation. We may find an unexpected clue from a license number plate photographed by accident.

LET'S

Capable of photographing, analyzing even under investigation.



Now, the needs that are required.

# LET'S Corporation, Ltd.

## The head office

Marunouchi 2nd BLDG., 2-20-1 Marunouchi, Naka-ku, Nagoya, Aichi Prefecture, 460-0002 JAPAN ■TEL:+81-52-201-6230

## Tokyo office

Ginza Chikuyotei Building 6th floor. 8-19-3 Ginza, Chuo-ku, Tokyo, 104-0061 JAPAN ■TEL:+81-3-3546-0889

**LET'S** ■Official website · <http://www.lets-co.co.jp/> ■E-mail · [info@lets-co.co.jp](mailto:info@lets-co.co.jp)

## Inquiry

[PLEASE NOTE] Specifications listed are subject to change without prior notice. We prohibited any unauthorized copy or reproduction.